

Year 6 Geography Week 2



L.I. To interpret information and sources of evidence and recognise bias

Success Criteria:

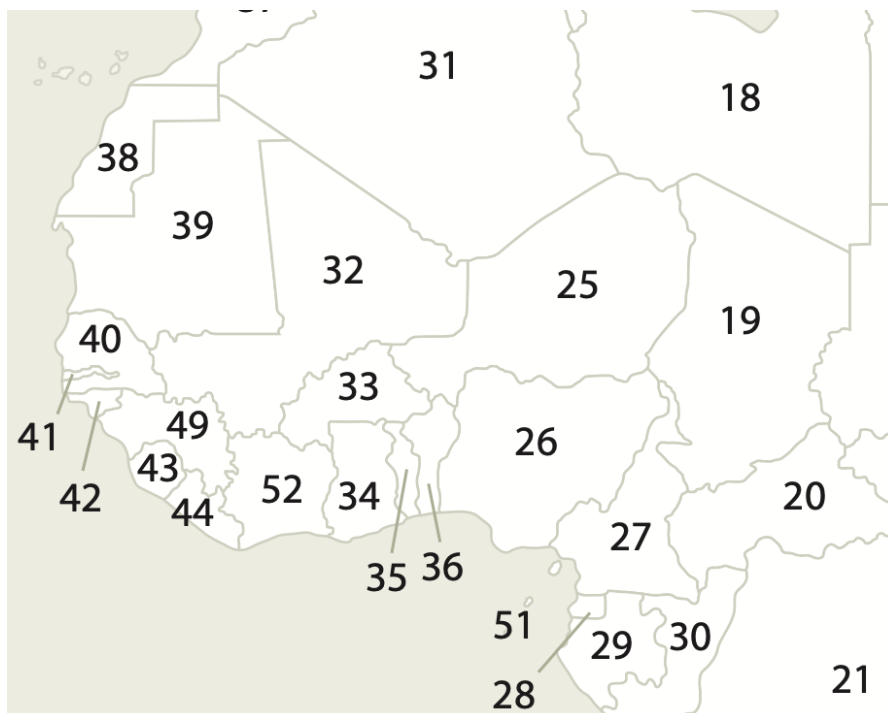
- I select information and sources of evidence.
- I understand some ways that human activities cause environments to change

Key vocab

Africa, Ghana, development culture, traditions, dialects, history, tourism, geography, climate, weather, economy, infrastructure, colonialism, GDP,

<https://youtu.be/tzXARwHs-YQ>

Task 1: Identify Ghana on the map below



Task 2: Look at the images below

- What do they show you?
- What is your understanding of life in Ghana?
- What do you notice about development in Ghana?
- How have the images on the right changed your view on Ghana?



Task 3

Your task is to complete the table below using the images and links to analyse and identify bias.

<https://youtu.be/KgYBp3xxidY>

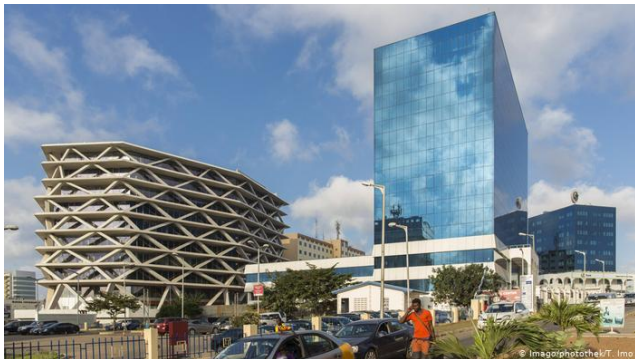
<https://kids.nationalgeographic.com/explore/countries/ghana/>

<https://www.oxfam.org/en/ghana-extreme-inequality-numbers#:~:text=2%25%20The%20wealthiest%2010%25%20of,and%20to%20have%20fewer%20assets>



Source taken from OXFAM advertisement

What does the source tell you about Ghana? How does it affect your perception on the country and its wealth?



Source: Image of Accra city (Ghana's capital)

What does the source tell you about Ghana? How does it affect your perception on the country and its wealth?