

Monday 13th July 2020

Week 14 – Topic

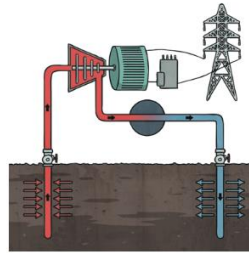
L.I. To investigate why people choose to live near volcanoes

Here, there are some facts that give us information about the advantages and disadvantages of living near a volcano.



Farming near a volcano can be really good, because the volcanic soil can produce very good crops.

twinkl.com



Volcanic regions can produce geothermal energy, which is clean and renewable.

twinkl.com



Ash can destroy farm crops.

twinkl.com



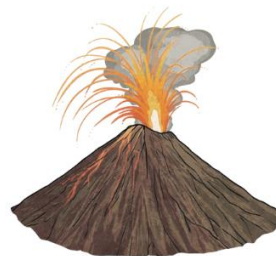
Volcanoes are tourist attractions bringing money and jobs to the area.

twinkl.com



Buildings can be destroyed by lava flow.

twinkl.com



Scientists can predict when a volcano will erupt.

twinkl.com



Dormant volcanoes may not erupt for hundreds of years.

twinkl.com



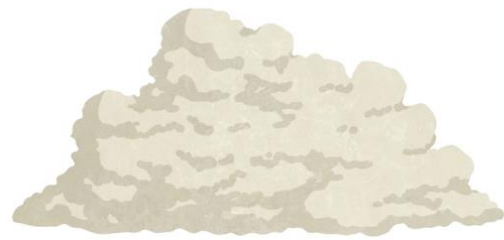
The isolated slopes of volcanoes are good habitats for rare plants and animals.

twinkl.com



Minerals and rocks made from volcanic lava are mined and used for building materials, bringing jobs to the area.

twinkl.com



People can be swept away by pyroclastic flows or lahars (mudflows).

twinkl.com



Ash can cause health problems for people and animals.

twinkl.com



Frequent earthquakes can damage property.

twinkl.com

Watch the video clip below that will help you know more about volcanoes:

<https://www.youtube.com/watch?v=VNGUdObDoLk>

<https://www.youtube.com/watch?v=CJhdEacwdAs> (stop video 2:40)

Your task this week is to investigate the benefits and dangers of living near a volcano:

Classify them into advantages and disadvantages and try to find one more piece of information about the benefits and dangers of living near a volcano.

Benefits / Positives	Dangers / Negatives