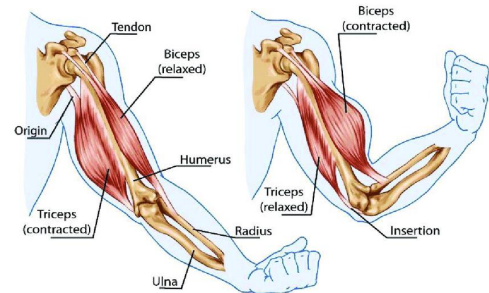


Week 13 - Science

LI: To create an investigation into the human body.

- I can consider how to make my investigation fair test
- I can make a prediction about what might happen
- I can record my results in a table
- I can draw conclusions based on my results

The three main functions of a skeleton are protection, support and movement. Movement also requires muscles. Muscles work in pairs. The pairs of muscles work together by contracting and relaxing to enable movement.



Watch the video clip below to find out about how muscles work.

<http://www.bbc.co.uk/education/clips/zj2kjsx>

Here are some ideas for investigations:

Do people with longer arms throw further?

Do people with longer legs run faster hands?

Can people with longer legs jump further?

Do taller people have longer arms?

Do people with bigger feet also have bigger hands?

Which one would you like to investigate?

Task 1: Choose an investigation and answer the questions below.

1. What do you want to find out?
2. What will you change?
3. What will stay the same?
4. What will you measure?
5. What equipment will you need?
6. What do you predict will happen?

Task 2: Conduct your investigation and record your results in a table, like the example to the right. Use your results to answer the questions below.

Arm length	Distance of throw
45cm	13m
62cm	17m
87cm	19m

1. What do you think your results show?
2. What would you do differently if you did this investigation again?
3. Do you think this investigation was a fair test? Why?