

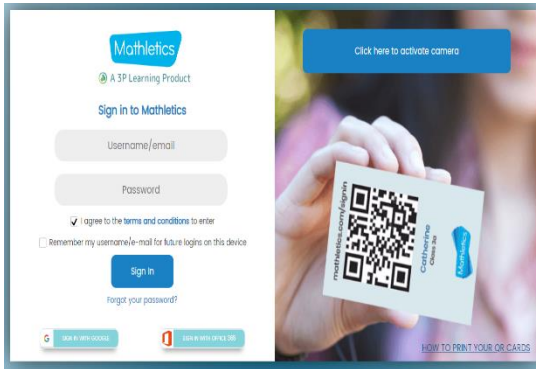


## How to log in and use Mathletics

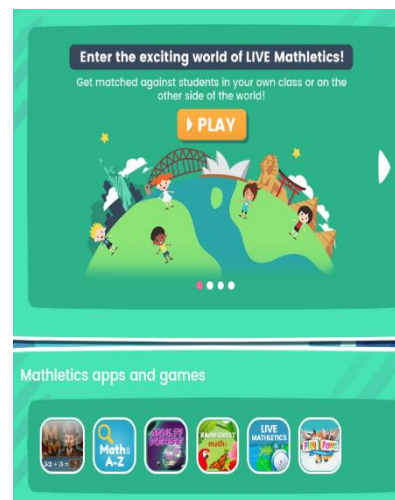
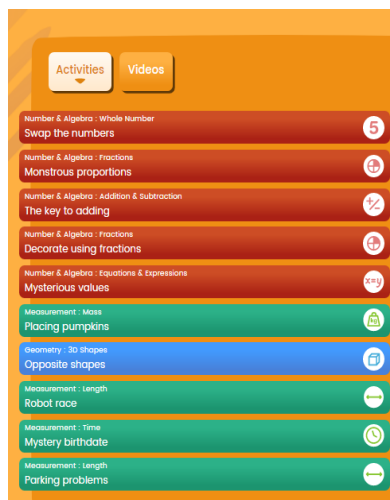
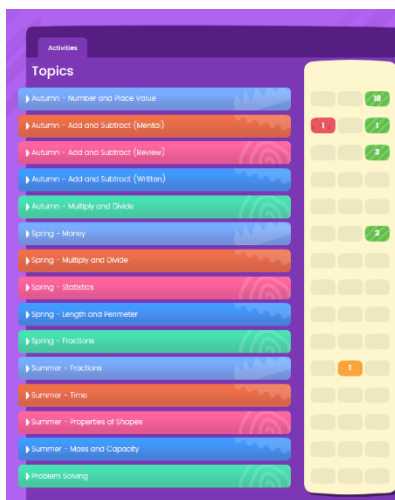
### 1. Enter address:

<https://login.mathletics.com/>

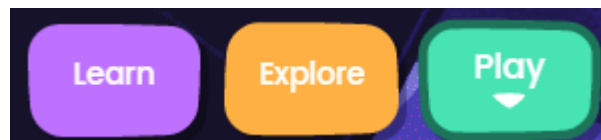
### 2. Enter username and password



### 3. If this is your first time, then you will have to quickly create your avatar. If not, you are good to go!



### 5. There are three areas to explore:



### 4. Keep practising each section until you get all questions correct.

### 5. Click the 'learn' button to see what tasks your teacher has set.

### 6. Ask an adult to help you if you are stuck.